



7 AXES INTERPOLATED



tower7
SEVEN AXES numerically controlled machine





NO LIMITS

An OMAG machining centre means no limits to any range of work.

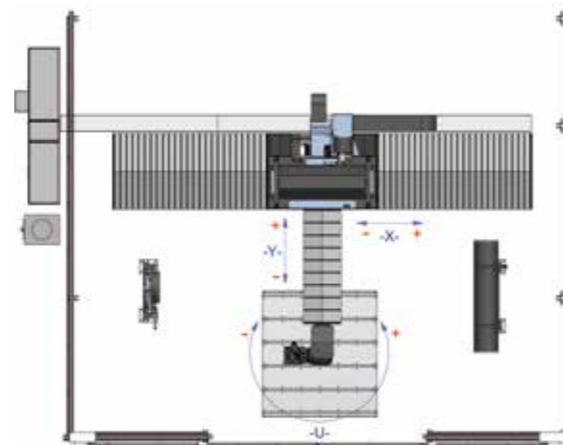
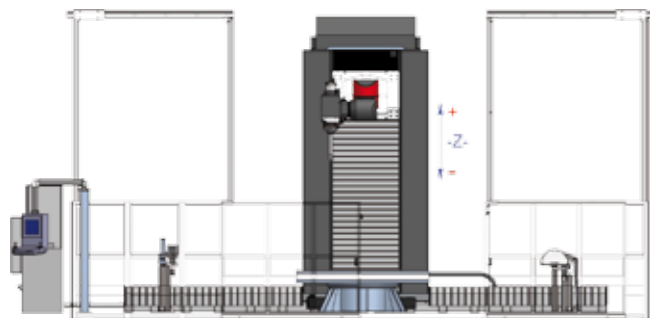
TOWER combines all the solutions developed by OMAG throughout its extended experience in leading-edge technology machines, allowing TOWER maximum rigidity and “limitless” movement capability.

TOWER, despite moving in a robot-like manner, features a torsional rigidity 50% higher than traditional anthropomorphic systems.

TOWER means no limits to any range of machining, it is designed and built so that it can be equipped and customised in order to perform any machining typical of smaller or bigger workshops.



Y axis



The available size range makes it possible for customers to make the best possible choice for their specific machining needs, thus ensuring a perfectly targeted purchase

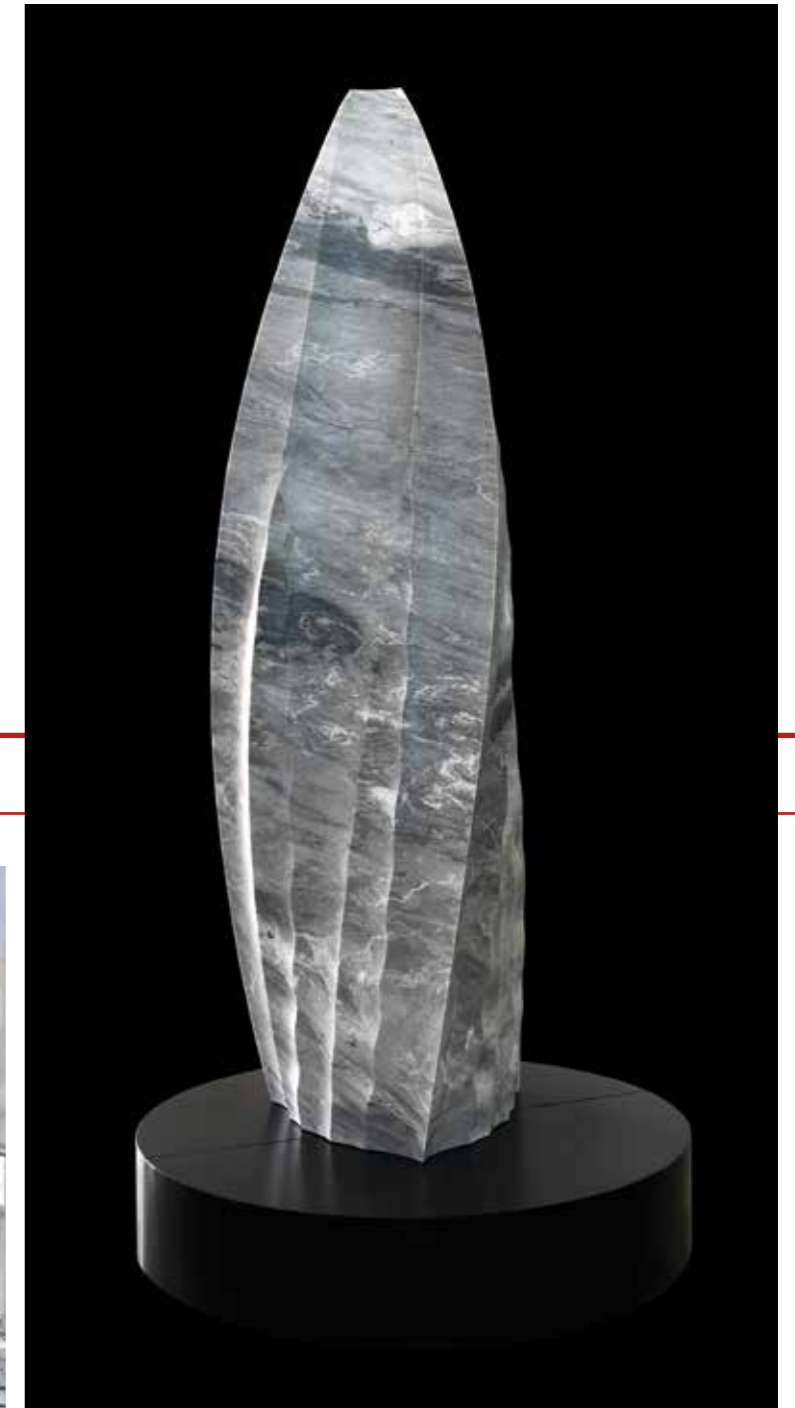
Nonetheless, the precision engineering also allows three-dimensional machining, low reliefs, inlays, kitchen tops, arches, capitals, sculptural columns.

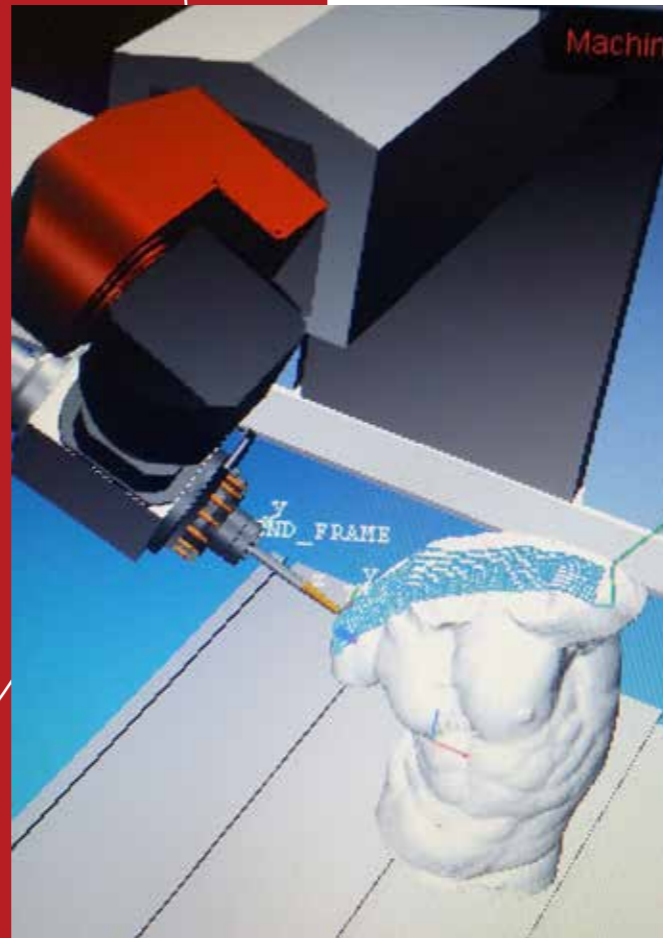
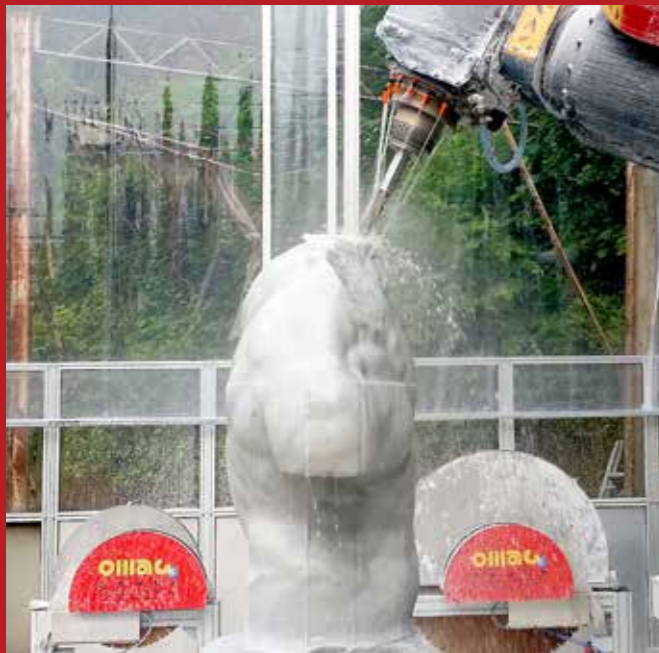
For any potential need TOWER, thanks to a 54 HP electrospindle, also designed by OMAG, is able to use remarkable diameter (Ø 1.450) disks, highly suitable for any milling, roughing and shaping need.



PRECISION ENGINEERING

X axis





The 7 axes the machine moves on, combined with a seventh axis, being the rotation of the working plane, allow every surface of the workpiece to be machined with no limits to the undercut.

- Twister Digital Brushless motorisation
- Fully reliable technology for axis movement
- All functions are monitored and managed by numeric control
- All types of material can be machined
- Management and interpolated programming up to 7 axis
- Dedicated and customisable software packages Easy and intuitive programming mode
- Dedicated software for machining up to 7 axis Automatic replacement system of the disc (Ø 1.100) and of individual machining tools

U axis



A axis

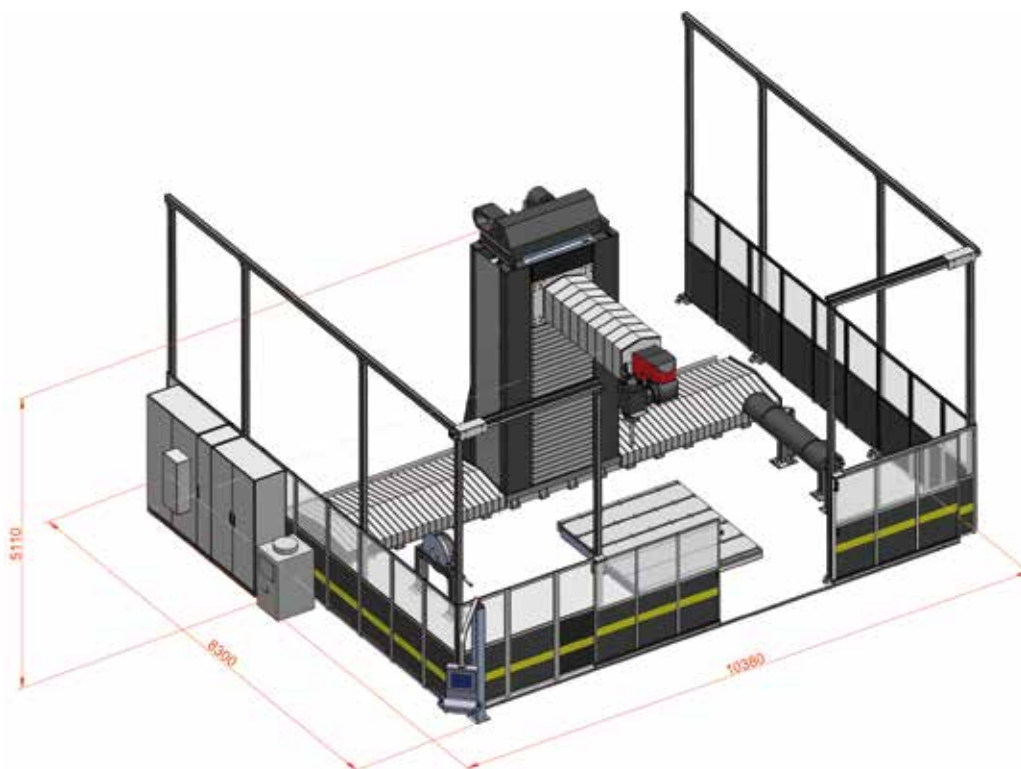


**TECHNOLOGY
FOR ART**

TECHNICAL DATA

Interpolated controlled axes	7 axes
X AXIS transversal stroke	4.000 mm. to 12.000 mm. on demand
X AXIS movement speed	0 ÷ 60 mt./min.
Y AXIS longitudinal stroke	2.000 mm. to 3.000 mm. on demand
Y AXIS movement speed	0 ÷ 60 mt./min.
Z AXIS vertical stroke	2.500 mm. to 6.000 mm. on demand
Z AXIS movement speed	0 ÷ 60 mt./min.
B AXIS rotation	0° ÷ +185° -185°
C AXIS rotation	0° ÷ -10° +185°
A AXIS rotation	0° ÷ +185° -185°
U AXIS rotation Working table	3.6 RPM (weight capacity 25 ton. - 35 ton.)
Working table sizes	3.500 x 2.000 mm. on demand
(Max) blade diameter BLADE5NC version	Ø 1.450 mm.
Motor power	S1 – Kw. 40 / H.p. 54
Tool Attachment	ISO50
Automatic blade change	from Ø 1.100 mm. on demand
Rotating control by inverter	0 ÷ 8.000 RPM (ISO50 version)
Tool storage capacity	chosen by the customer (ISO50 version)
Water consumption (about approximate 4 bar)	60 Lt. / min.
Air consumption	20 NI / (6 bar)
Machine weight	on demand

X 5.000 mm.
Y 2.000 mm.
Z 2.500 mm.



Omag SpA - Via Stezzano, 31 - 24050 Zanica (Bg) Italy - Tel. +39 035 670070/+39 035 675140/+39 035 675111
Fax +39 035 670259 - www.omagspa.it - info@omagspa.it

We reserve the right to modify at our sole discretion the indicated technical data in order to improve. The data supplied in this catalogue must be considered for you for reference only.